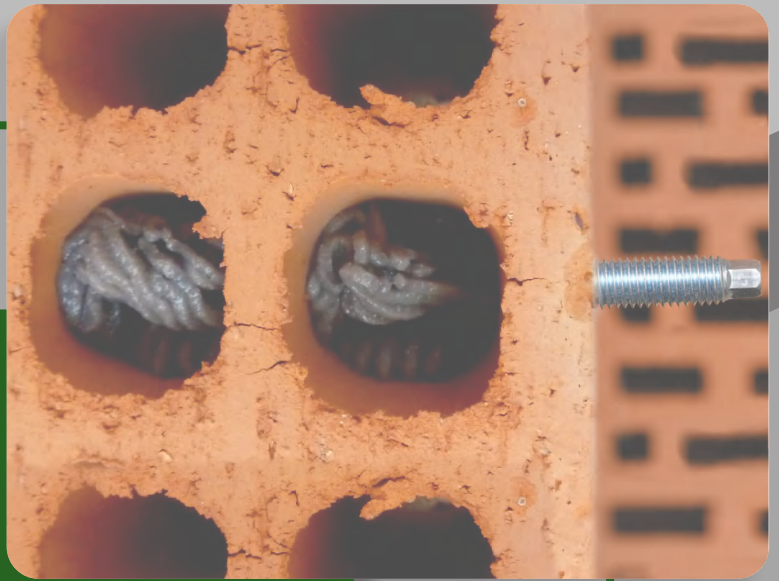


CHEFIX

CHEMICAL ANCHORS AND APPLICATION ACCESSORIES



**THE MOST USEFUL AND
EFFECTIVE SOLUTION**

damesa 

PL POLYESTER RESIN FOR HIGH PERFORMANCES

Materials for application:

- Solid brick
- Hollow brick
- Hollow block
- Hollow concrete block

It can handle masonry loads of up to 595 kg and concrete loads of up to 4600 kg. This product can be used with threaded rod.



VERY EFFECTIVE



Part Number	Content (ml)	Nozzle of Application	For Dispensing Tool	Duration (month)	Nozzle Included	Minimum Unit of Sale	Outer Box Quantity
0600001-0	300	CA00	PA-30 / PA30P / PE30 / AN30 / AN40P	12	1	1	12
0600001-1	400	CA00	PB40 / PB40P / AN40P	14	1	1	12



POLYESTER RESIN STYRENE FREE FOR HIGH PERFORMANCES

FREE-PL

Materials for application:

- Uncracked concrete
- Solid masonry
- Hollow masonry

WET CONDITIONS

It can handle higher loads, of up to 700 kg in the case of masonry and 8900 kg in that of concrete. This product can be used with threaded rod.



VERY EFFECTIVE



Part Number	Content (ml)	Nozzle of Application	For Dispensing Tool	Duration (month)	Nozzle Included	Minimum Unit of Sale	Outer Box Quantity
0600002-0	300	CA00	PA-30 / PA30P / PE30 / AN30 / AN40P	12	1	1	12
0600002-1	400	CA00	PB40 / PB40P / AN40P	14	1	1	12



VINYLESTER RESIN STYRENE FREE

VE-PLUS

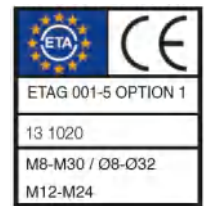
Materials for application:

- Cracked concrete
- Threaded bars and reinforced bar
- Masonry

It can take loads of up to 15000 kg in concrete and can also be used in surfaces covered in water. This resin is dielectric and is fire resistant for 120 minutes. This product can be used with corrugated rod.



**MAXIMUM
STRENGTH**



Part Number	Content (ml)	Nozzle of Application	For Dispensing Tool	Duration (month)	Nozzle Included	Minimum Unit of Sale	Outer Box Quantity
0600004-0	300	CA00	PA-30 / PA30P / PE30 / AN30 / AN40P	12	1	1	12
0600004-1	400	CA00	PB40 / PB40P / AN40P	14	1	1	12

EPO-TECH

EPOXY-ACRYLATE RESIN STYRENE FREE

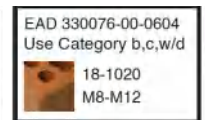
Materials for application:

- Concrete
- Solid brick and hollow brick
- Aerated concrete
- Wood

It can withstand loads up to 9500 kg in concrete applications. This product can be used with threaded and corrugated rod.



**HIGH
POWERED**



Part Number	Content (ml)	Nozzle of Application	For Dispensing Tool	Duration (month)	Nozzle Included	Minimum Unit of Sale	Outer Box Quantity
0600003-1	400	CA00	PB40 / PB40P / AN40P	14	1	1	12



LIGHTWEIGHT ADHESIVE DISPENSING TOOL

CARTRIDGES of 300 ml and 310 ml

Features:

- Spring-loaded double lever
- Medium-viscosity

Part Number	Capacity of content (ml)	Force Ratio	Box Quantity	Outer Box Quantity
0600010-0	Cartridges of 300 ml and 310 ml	12:1	1	6



PROFESIONAL ADHESIVE DISPENSING TOOL

CARTRIDGES of 300 ml and 310 ml

Features:

- Drip-proof
- Surface-treated rod to avoid damage
- Medium to high viscosity

Part Number	Capacity of content (ml)	Force Ratio	Box Quantity	Outer Box Quantity
0600010-1	Cartridges of 300 ml and 310 ml	18:1	1	6



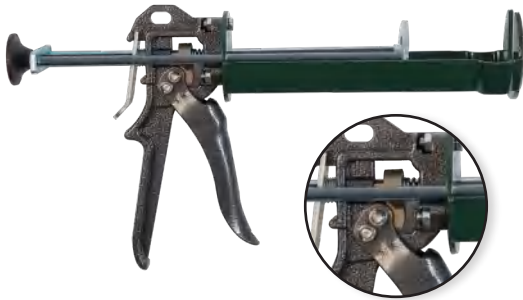
2-PART LIGHTWEIGHT ADHESIVE DISPENSING TOOL

CARTRIDGES of 380 ml and 410 ml

Features:

- Steel structure with double concentric plunger and hexagonal rods

Part Number	Capacity of content (ml)	Force Ratio	Box Quantity	Outer Box Quantity
0600011-0	Cartridges of 380 ml and 410 ml	12:1	1	6



2-PART PROFESSIONAL ADHESIVE DISPENSING TOOL

CARTRIDGES of 380 ml and 410 ml

Features:

- Steel structure with double concentric plunger and hexagonal rods

Part Number	Capacity of content (ml)	Force Ratio	Box Quantity	Outer Box Quantity
0600011-1	Cartridges of 380 ml and 410 ml	25:1	1	6



PROFESSIONAL TUBULAR ELECTRIC DISPENSING TOOL

BAGS and CARTRIDGES of 300 ml, 310 ml and 410 ml

Features:

- Lithium Ion Battery 7.4 V-1.3 A (Battery charger included)
- Anti-drip
- Speed control
- LED light
- Force 250 kgf / Velocity 6,9 mm/sg

Part Number	Capacity of content (ml)	Weight	Box Quantity	Outer Box Quantity
0600012-0	Bags and Cartridges of 300 ml, 310 ml and 410 ml	1,4 kg	1	6



LIGHTWEIGHT PNEUMATIC DISPENSING TOOL

CARTRIDGES of 300 ml and 310 ml

Features:

- Direct action mechanism
- Compact and easy to use in accessible applications
- High and low viscosity sealants
- Silent (less than 70 dB)
- High power: 1.5 kN

Part Number	Capacity of content (ml)	Working Pressure	Box Quantity	Outer Box Quantity
0600013-0	Cartridges of 300 ml and 310 ml	6,8 bars	1	6



PROFESSIONAL PNEUMATIC DISPENSING TOOL

BAGS of 300 ml, 410 ml and 600 ml

Features:

- Direct action mechanism
- Compact and easy to use in accessible applications
- High and low viscosity sealants
- Silent (less than 70 dB)
- High power: 1.5 kN

Part Number	Capacity of content (ml)	Working Pressure	Box Quantity	Outer Box Quantity
0600013-1	Bags of 300 ml, 410 ml and 600 ml	6,8 bars	1	6



BLOW PUMP

Features:

- Air pressure: 5 kg
- Air out: 7 kg
- Pipe rotation: 360 degrees

Part Number	Length	Diameter	Box Quantity	Outer Box Quantity
0600000-1	22,5 cm	Ø 6	1	1

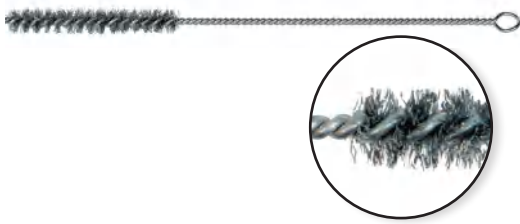


MIXING NOZZLE OF APPLICATION

CARTRIDGES of 150 ml, 175 ml, 300 ml, 375 ml and 400 ml

All our chemical anchoring part numbers include an application mixing nozzle.

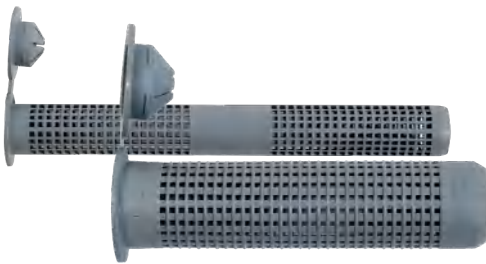
Part Number	Application (ml)	Box Quantity	Outer Box Quantity
0600000-0	Cartridges of 150 ml, 175 ml, 300 ml, 375 ml and 400 ml	12	120



STEEL BRUSH FOR POLISHING

The steel brush is used for cleaning out drilled holes in order to optimize the adherence of the resin.

Part Number	Ø Application	Box Quantity	Outer Box Quantity
0600007-1	12	1	10
0600007-2	14	1	10
0600007-4	18	1	5
0600007-9	Kit of 3 units (Ø 12, 14 y 18)	1(3 units)	10



NYLON SLEEVE

Made of nylon, is particularly useful for the application of chemical anchors and ideal for fixing in recesses.

Part Number	Ø x L	Box Quantity	Outer Box Quantity
0600005-0	12 x 50	10	100
0600005-5	16 x 85	10	100
0600006-0	16 x 130	10	100
0600006-5	20 x 85	10	50



INTERNAL THREADED SLEEVE

The internal threaded sleeve, made of white zinc-plated steel, is especially useful for the application of chemical anchors, allowing an optimal fastening of the screw.

Part Number	Ø x L	Box Quantity	Outer Box Quantity
0600008-0	12 x 80	25	400
0600008-5	14 x 80	20	320
0600009-0	16 x 80	20	320

**CHEMICAL
ANCHORS
AND APPLICATION ACCESSORIES**

CHEFIX

damesa 
www.damesa.com

