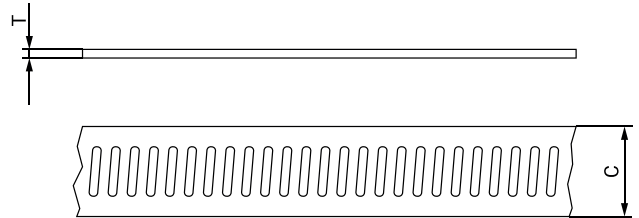


**ADAPFLEX**

Adapflex perforated banding with separate housings is recommended for occasional use in applications with variable diameters.

The fact that this clamp comes in rolls of 3 m and 25 m means that you can clamp diameters which standard clamps cannot cover. There is no need to know the application diameter beforehand as you can adjust the clamp to the diameter required on each occasion.

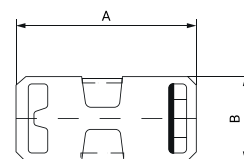
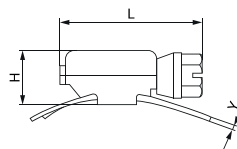
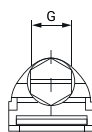
The assembly of this clamp is quick, clean and easy. All you require is a cutting tool and a conventional flat-head screwdriver.

Adapflex is available in different material qualities, thicknesses and bandwidths in a variety of different presentations. A practical and user-friendly kit in blister pack has been designed which contains 3m of band and 6 or 8 housings depending on the material quality. For bigger jobs 25 m rolls are available as well as sturdy boxes each containing 50 housings.

BAND MATERIAL:	Stainless steel W2 AISI 430 o W4 AISI 304
HOUSING MATERIAL:	Stainless steel W2 AISI 430 with steel Qst 36-3 o W4 AISI 304 screw
FINISH HOUSING:	Zinc-plated Cr3
CORROSION RESISTANCE:	72 hours Salt Spray for W2 (ASTM B-117) 400 hours Salt Spray for W4 (ASTM B-117)

ENDLESS BAND

Denomination	Part Number	Material	C ±0.2	T ±0.1	Box Quantity	Outer Box Quantity
CP825W2	03035111	W2	8	0,65	25 metres	14
CP1425W2	03035611	W2	14	0,70	25 metres	10
CP825W4	03035311	W4	8	0,65	25 metres	14
CP1425W4	03035811	W4	14	0,70	25 metres	10

**ADAPFLEX****HOUSING FOR ENDLESS BAND**

Denomination	Part Number	Material	L ±1	Y ±0.1	H ±0.5	B ±0.2	G ±0.2	A ±0.5	Maximum Values PAR (Nm)	Box Quantity	Outer Box Quantity
CCP8W2	03035121	W2	21,0	0,7	8,8	12	6	32,5	1.5	50 uds.	2.000
CCP14W2	03035621	W2	31,3	1,0	11,7	18	8	38,8	5.0	50 uds.	800
CCP8W4	03035321	W4	21,0	0,7	8,8	12	6	32,5	1.5	50 uds.	800
CCP14W4	03035821	W4	31,3	1,0	11,7	18	8	38,8	5.0	50 uds.	800

**ENDLESS BAND + HOUSING BLISTER KIT**

Denomination	Part Number	Material	Bandwidth mm	Maximum Values PAR (Nm)	Box Quantity	Outer Box Quantity
CCP83W2	03035101	W2	8	1.5	3 m + 8 housings	100
CCP143W2	03035601	W2	14	5.0	3 m + 6 housings	50
CCP83W4	03035301	W4	8	1.5	3 m + 8 housings	100
CCP143W4	03035801	W4	14	5.0	3 m + 6 housings	50