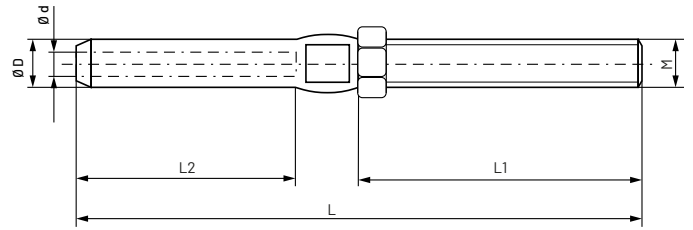


# Turnbuckle threaded rod end piece



The design of the stainless steel rod end allows for an easy placement of the wire in the inner hole for subsequent pressing. The opposite end is assembled to the application by a threaded fixture.

TIPS: Excellent corrosion resistance is guaranteed by the stainless steel (AISI 316) used to manufacture the End, especially in marine environments.

**MATERIAL:** Stainless steel AISI 316

Cable size Ø (mm)	Denom.	Part Number	Ø d 0+0.25	M Metric	L	L1	L2	Ø D	Box Qty.	Outer Box Qty.
2,5	TVI 125	09528919	2,7	M5	86	40	39,5	5,5	10	160
3	TVI 103	09528927	3,2	M6	100	48	45	6,3	10	160
4	TVI 104	09528935	4,2	M8	117	57	51	7,5	10	80
5	TVI 105	09528943	5,2	M10	130	63	54	9	10	160
6	TVI 106	09528951	6,2	M12	162	80	68	12,3	5	40
7	TVI 107	09528960	7,3	M14	178	90	77	14	5	40
8	TVI 108	09528978	8,3	M16	200	100	86	16	1	25
10	TVI 110	09528986	10,4	M20	230	118	98	18,5	1	25