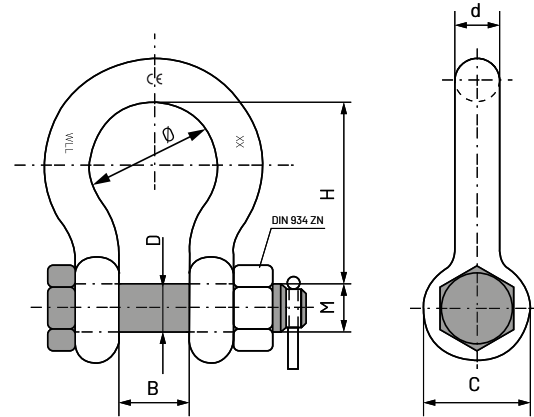
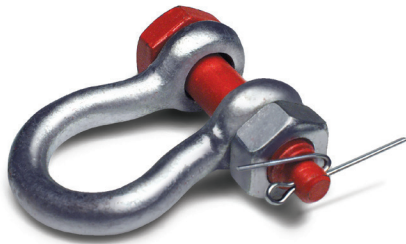


Heavy-duty bow shackle with nut and cotter pin



Each shackle is marked with its size and its working load in tonnes, guaranteeing the correct choice and, therefore, increasing safety. The widening of the bow makes it easier to accommodate the sling or hook of choice, and can improve mobility if necessary. The hex-head screw with nut and pin, which acts as a bolt increases the required safety level.

TIPS: For correct assembly, the hook must always be attached to the shackle bolt and the sling, the wire or rope must be attached to the shackle bow. Assembly must never be carried out in reverse order. Although lateral loads must be avoided, it allows for special applications at 45° and 90°.

MATERIAL:	High resistance steel
	Body: Steel C45
	Shackle bolt: Alloy steel
FINISH:	Body: Galvanized
	Shackle bolt: Red

The following SWL load reductions must be taken into account for these cases: 45° reduction to 70 % and 90° reduction to 50 %. In order not to compromise safety, the SWL established for each size must never be exceeded.

Nominal size (mm)	Denomination	Part Number	B	D	d	H	Ø	C	Workload W.L.L (kg)	Box Quantity	Outer Box Quantity
5	GLART105	09528337	9,53	6,35	4,76	22,23	17,46	14,29	330	50	400
6	GLART106	09528345	12,70	7,94	6,35	28,58	19,84	17,46	500	50	200
8	GLART108	09528353	13,49	9,53	7,94	30,96	21,43	20,64	750	50	50
10	GLART110	09528361	16,67	11,11	9,53	36,51	26,19	24,61	1.000	50	50
12	GLART112	09528370	20,64	15,88	12,70	47,63	33,34	30,16	2.000	25	25
16	GLART116	09528388	26,99	19,05	15,88	60,33	42,86	39,69	3.250	10	10
19	GLART119	09528396	31,75	22,23	19,05	71,44	50,80	47,63	4.750	5	5