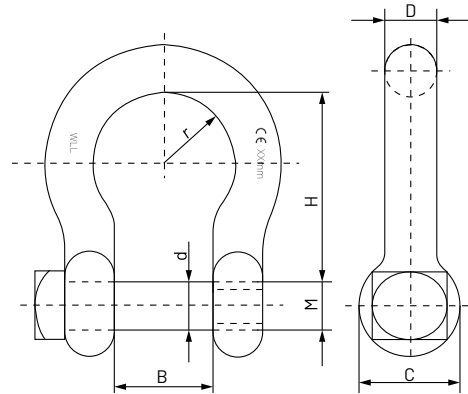


# Bow shackle square head



The widening of the bow makes it easier to accommodate the sling or hook of choice, and can improve mobility if necessary.

The square design of the pin head is difficult to tamper if required for the lifting structure for safety purposes.

**TIPS:** For correct assembly, the hook must always be attached to the shackle bolt and the sling, the wire or rope must be attached to the shackle bow. Assembly must never be carried out in reverse order. Although lateral loads must be avoided, its bow design allows for special applications

**MATERIAL:** Steel C15  
**FINISH:** Zinc plated

at 45° and 90°. The following SWL load reductions must be taken into account for these cases: 45° reduction to 70 % and 90° reduction to 50 %. In order not to compromise safety, the SWL established for each size must never be exceeded.

Size D	Denomination	Part Number	d	B	H	C	2r	M	Workload W.L.L (kg)	Box Quantity	Outer Box Qty.
5	GLCC105	09527705	5	10	19,5	10	15	M5	80	50	800
6	GLCC106	09527713	6	12	24	12	18	M6	100	50	400
8	GLCC108	09527721	8	16	32	16	24	M8	200	50	200
10	GLCC110	09527730	10	20	40	19	30	M10	320	50	50
11	GLCC111	09527748	11	22	44,5	21	33	M11	400	30	30
12	GLCC112	09527756	12	25	49	24	36	M12	520	25	25
14	GLCC114	09527764	14	28	59	27	42	M14	650	10	80
16	GLCC116	09527772	16	32	64	31	48	M16	800	10	40
20	GLCC120	09527780	20	38	80	38	60	M20	1.100	5	20
22	GLCC122	09527799	22	44	85	43	66	M22	1.500	1	10