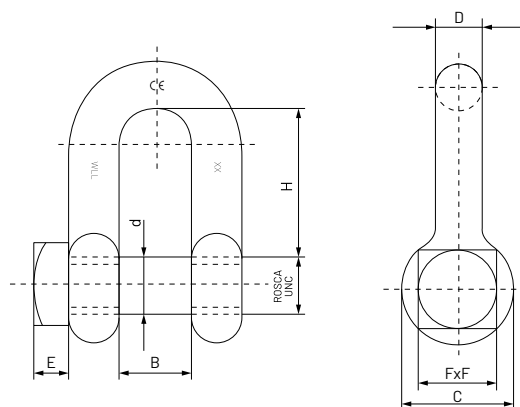


# Trawling d-shackle square head



The high-resistance steel component of its structure ensures that great working loads can be lifted with a smaller shackle, thus facilitating its handling.

**TIPS:** For correct assembly, the hook must always be attached to the shackle bolt and the sling, the wire or rope must be attached to the shackle bow. Assembly must never

**MATERIAL:** High resistance steel C45  
**FINISH:** Black

be carried out in reverse order. In order not to compromise safety, the SWL established for each size must never be exceeded.

Size D/d	Denomination	Part Number	B	H	C	FxF	E	Workload W.L.L (kg)	Box Quantity	Outer Box Quantity
16/20	GRPC1620	09528433	27	51	40	28	12	3.250	5	20
20/22	GRPC2022	09528409	32	60,5	48	32	12	4.750	1	12
22/25	GRPC2225	09528417	37	71,5	54	38	15	6500	1	8