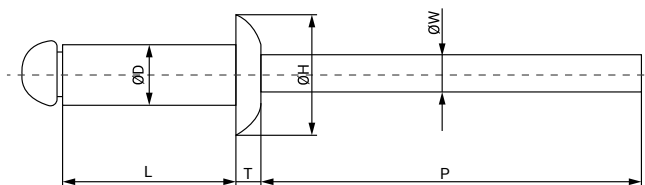


The standard blind rivets are used for joining all types of metallic materials. Steel rivets are used when a greater resistance to breaking and consistency in the assembly is desired.

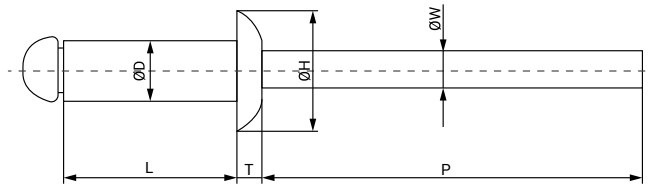
MATERIAL: Body: Al 5050 steel
Stem: Carbon Steel

FINISH: Body: Polished
Stem: Zinc plated Cr3

| Size Ø D x L | Part Number | Ø D | L +1.0 - 0.2 | Ø H | P Min. | T ± 0.2 | Ø W ± 0.15 | Box Quantity | Outer Box Quantity |
|-----------------|----------------|---------------|-----------------|--------------|-----------|------------|---------------|-----------------|-----------------------|
| 2,4 x 6 | 09101013 | 2,4 +0,-0,15 | 6 | 4,7 +0,3-0,1 | 27,0 | 0,8 | 1,40 | 500 | 10.000 |
| 2,4 x 8 | 09101021 | 2,4 +0,-0,15 | 8 | 4,7 +0,3-0,1 | 27,0 | 0,8 | 1,40 | 500 | 8.000 |
| 3 x 5 | 09101620 | 3,0 +0,08-0,1 | 5 | 6,5 +0,-0,7 | 27,0 | 1,0 | 1,75 | 500 | 10.000 |
| 3 x 6 | 09101638 | 3,0 +0,08-0,1 | 6 | 6,5 +0,-0,7 | 27,0 | 1,0 | 1,75 | 500 | 10.000 |
| 3 x 8 | 09101611 | 3,0 +0,08-0,1 | 8 | 6,5 +0,-0,7 | 27,0 | 1,0 | 1,75 | 500 | 10.000 |
| 3 x 10 | 09101662 | 3,0 +0,08-0,1 | 10 | 6,5 +0,-0,7 | 27,0 | 1,0 | 1,75 | 500 | 10.000 |
| 3 x 12 | 09101689 | 3,0 +0,08-0,1 | 12 | 6,5 +0,-0,7 | 27,0 | 1,0 | 1,75 | 500 | 10.000 |
| 3,2 x 6 | 09101048 | 3,2 +0,08-0,1 | 6 | 6,5 +0,-0,7 | 27,0 | 1,0 | 1,75 | 500 | 10.000 |
| 3,2 x 8 | 09101056 | 3,2 +0,08-0,1 | 8 | 6,5 +0,-0,7 | 27,0 | 1,0 | 1,75 | 500 | 10.000 |
| 3,2 x 10 | 09101064 | 3,2 +0,08-0,1 | 10 | 6,5 +0,-0,7 | 27,0 | 1,0 | 1,75 | 500 | 10.000 |
| 3,2 x 12 | 09101072 | 3,2 +0,08-0,1 | 12 | 6,5 +0,-0,7 | 27,0 | 1,0 | 1,75 | 500 | 10.000 |
| 3,2 x 15 | 09101080 | 3,2 +0,08-0,1 | 15 | 6,5 +0,-0,7 | 27,0 | 1,0 | 1,75 | 500 | 10.000 |
| 3,2 x 18 | 09101099 | 3,2 +0,08-0,1 | 18 | 6,5 +0,-0,7 | 27,0 | 1,0 | 1,75 | 500 | 10.000 |



| Size Ø D x L | Part Number | Ø D | L +1.0 - 0.2 | Ø H | P Min. | T ± 0.2 | Ø W ± 0.15 | Box Quantity | Outer Box Quantity |
|-----------------|----------------|----------------|-----------------|------------|-----------|------------|---------------|-----------------|-----------------------|
| 4 x 6 | 09101101 | 4,0 +0,08-0,15 | 6 | 7,5 +-0,5 | 27,0 | 1,2 | 2,08 | 500 | 10.000 |
| 4 x 7 | 09101110 | 4,0 +0,08-0,15 | 7 | 7,5 +-0,5 | 27,0 | 1,2 | 2,08 | 500 | 10.000 |
| 4 x 8 | 09101128 | 4,0 +0,08-0,15 | 8 | 7,5 +-0,5 | 27,0 | 1,2 | 2,08 | 500 | 10.000 |
| 4 x 10 | 09101136 | 4,0 +0,08-0,15 | 10 | 7,5 +-0,5 | 27,0 | 1,2 | 2,08 | 500 | 10.000 |
| 4 x 12 | 09101144 | 4,0 +0,08-0,15 | 12 | 7,5 +-0,5 | 27,0 | 1,2 | 2,08 | 500 | 10.000 |
| 4 x 14 | 09101734 | 4,0 +0,08-0,15 | 14 | 7,5 +-0,5 | 27,0 | 1,2 | 2,08 | 500 | 10.000 |
| 4 x 16 | 09101742 | 4,0 +0,08-0,15 | 16 | 7,5 +-0,5 | 27,0 | 1,2 | 2,08 | 500 | 10.000 |
| 4 x 18 | 09101160 | 4,0 +0,08-0,15 | 18 | 7,5 +-0,5 | 27,0 | 1,2 | 2,08 | 500 | 10.000 |
| 4 x 20 | 09101750 | 4,0 +0,08-0,15 | 20 | 7,5 +-0,5 | 27,0 | 1,2 | 2,08 | 500 | 10.000 |
| 4,8 x 6 | 09101216 | 4,8 +0,08-0,15 | 6 | 9,5 +0-0,1 | 27,0 | 1,4 | 2,58 | 500 | 10.000 |
| 4,8 x 8 | 09101224 | 4,8 +0,08-0,15 | 8 | 9,5 +0-0,1 | 27,0 | 1,4 | 2,58 | 500 | 10.000 |
| 4,8 x 10 | 09101232 | 4,8 +0,08-0,15 | 10 | 9,5 +0-0,1 | 27,0 | 1,4 | 2,58 | 500 | 10.000 |
| 4,8 x 12 | 09101240 | 4,8 +0,08-0,15 | 12 | 9,5 +0-0,1 | 27,0 | 1,4 | 2,58 | 500 | 10.000 |
| 4,8 x 14 | 09101507 | 4,8 +0,08-0,15 | 14 | 9,5 +0-0,1 | 27,0 | 1,4 | 2,58 | 500 | 5.000 |
| 4,8 x 16 | 09101515 | 4,8 +0,08-0,15 | 16 | 9,5 +0-0,1 | 27,0 | 1,4 | 2,58 | 500 | 5.000 |
| 4,8 x 18 | 09101267 | 4,8 +0,08-0,15 | 18 | 9,5 +0-0,1 | 27,0 | 1,4 | 2,58 | 500 | 5.000 |
| 4,8 x 21 | 09101275 | 4,8 +0,08-0,15 | 21 | 9,5 +0-0,1 | 27,0 | 1,4 | 2,58 | 250 | 5.000 |
| 4,8 x 24 | 09101283 | 4,8 +0,08-0,15 | 24 | 9,5 +0-0,1 | 27,0 | 1,4 | 2,58 | 250 | 5.000 |
| 4,8 x 30 | 09101304 | 4,8 +0,08-0,15 | 30 | 9,5 +0-0,1 | 27,0 | 1,4 | 2,58 | 250 | 2.500 |



| Size Ø D x L | Part Number | Ø D | L +1.0 - 0.2 | Ø H | P Min. | T ± 0.2 | Ø W ± 0.15 | Box Quantity | Outer Box Quantity |
|-----------------|----------------|----------------|-----------------|------------|-----------|------------|---------------|-----------------|-----------------------|
| 3 x 7 | 09101646 | 3,0 +0,08-0,1 | 7 | 6,0 +-0,2 | 27,0 | 1,0 | 1,80 | 500 | 8.000 |
| 3 x 10 | 09101664 | 3,0 +0,08-0,1 | 10 | 6,0 +-0,2 | 27,0 | 1,0 | 1,80 | 500 | 10.000 |
| 3,2 x 5 | 09101030 | 3,2 +0,08-0,1 | 5 | 6,4 +-0,2 | 27,0 | 1,0 | 1,80 | 500 | 8.000 |
| 3,2 x 18 | 09101057 | 3,2 +0,08-0,1 | 18 | 6,4 +-0,2 | 27,0 | 1,0 | 1,80 | 500 | 4.000 |
| 4 x 5 | 09101603 | 4,0 +0,08-0,15 | 5 | 8,0 +-0,2 | 27,0 | 1,4 | 2,20 | 500 | 4.000 |
| 4 x 25 | 09101195 | 4,0 +0,08-0,15 | 25 | 8,0 +-0,2 | 27,0 | 1,4 | 2,20 | 500 | 10.000 |
| 4 x 30 | 09101208 | 4,0 +0,08-0,15 | 30 | 8,0 +-0,2 | 27,0 | 1,4 | 2,20 | 500 | 10.000 |
| 4,8 x 27 | 09101291 | 4,8 +0,08-0,15 | 27 | 9,5 +-0,3 | 27,0 | 1,5 | 2,65 | 200 | 3.200 |
| 4,8 x 35 | 09101312 | 4,8 +0,08-0,15 | 35 | 9,5 +-0,3 | 27,0 | 1,5 | 2,65 | 250 | 1.600 |
| 4,8 x 45 | 09101339 | 4,8 +0,08-0,15 | 45 | 9,5 +-0,3 | 27,0 | 1,5 | 2,65 | 500 | 500 |
| 5 x 40 | 09101320 | 5,0 +0,08-0,15 | 40 | 9,5 +-0,3 | 27,0 | 1,6 | 2,65 | 500 | 500 |
| 6 x 8 | 09101830 | 6,0 +0,08-0,15 | 8 | 12,0 +-0,3 | 27,0 | 1,8 | 3,20 | 500 | 2.000 |
| 6 x 10 | 09101371 | 6,0 +0,08-0,15 | 10 | 12,0 +-0,3 | 27,0 | 1,8 | 3,20 | 500 | 4.000 |
| 6 x 12 | 09101380 | 6,0 +0,08-0,15 | 12 | 12,0 +-0,3 | 27,0 | 1,8 | 3,20 | 500 | 4.000 |
| 6 x 16 | 09101398 | 6,0 +0,08-0,15 | 16 | 12,0 +-0,3 | 27,0 | 1,8 | 3,20 | 500 | 500 |
| 6 x 18 | 09101400 | 6,0 +0,08-0,15 | 18 | 12,0 +-0,3 | 27,0 | 1,8 | 3,20 | 400 | 1.600 |
| 6 x 20 | 09101419 | 6,0 +0,08-0,15 | 20 | 12,0 +-0,3 | 27,0 | 1,8 | 3,20 | 400 | 3.200 |
| 6 x 25 | 09101427 | 6,0 +0,08-0,15 | 25 | 12,0 +-0,3 | 27,0 | 1,8 | 3,20 | 400 | 1.600 |
| 6,4 x 12 | 09101910 | 6,4 +0,08-0,15 | 12 | 13,0 +-0,3 | 27,0 | 2,2 | 3,60 | 500 | 500 |
| 6,4 x 15 | 09101929 | 6,4 +0,08-0,15 | 15 | 13,0 +-0,3 | 27,0 | 2,2 | 3,60 | 250 | 2.000 |
| 6,4 x 18 | 09101937 | 6,4 +0,08-0,15 | 18 | 13,0 +-0,3 | 27,0 | 2,2 | 3,60 | 400 | 1.600 |