

This buckle is made of stainless steel and can be used for both the lightweight and heavy-duty endless bands. Pressure is exerted on the band when the buckle is tapped, preventing it from coming loose.

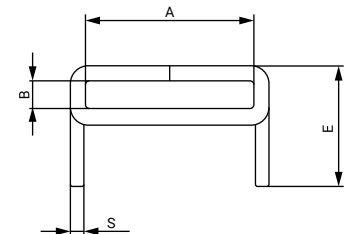
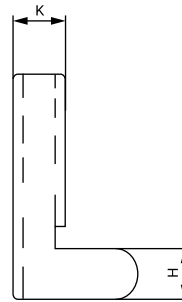
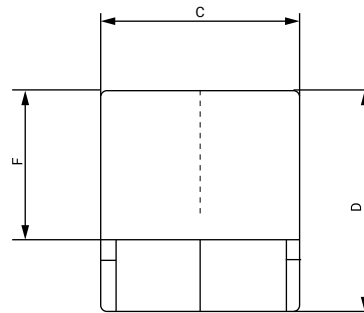
**MATERIAL:** W4 Stainless steel

AISI 304

**CORROSION** 400 hours salt spray

**RESISTANCE:** (ASTM B-117)

Part Number	A mm	B ±0.3	C ±0.3	D Min.	E ±0.2	F ±0.2	S ±0.03	Box Quantity	Outer Box Quantity
03012806	9,5	17	24	2,5	2,15	7,2	1,2	100	100
03012814	12,7	27	34	4	4,90	10	1,3	100	100
03012822	16	27	38	4	5,10	10	1,4	100	100
03012830	19	27	42	4,5	4,50	11	1,6	100	100



Part Number	A mm	B ±0.3	C ±0.3	D Min.	E ±0.2	F ±0.2	H ±0.2	K ±0.3	S ±0.03	Box Quantity	Outer Box Qty.
03012800	6,4	3,0	9,0	11,0	6,0	7,0	2,35	4,5	0,60	100	100