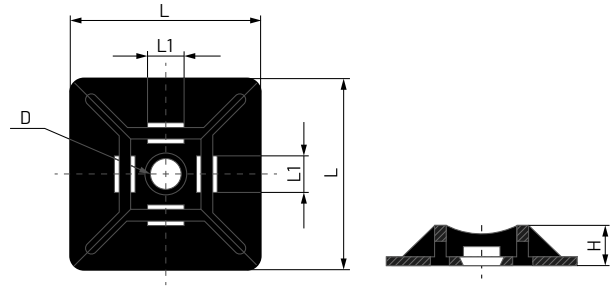


Self adhesive cable tie mounts - Black



The self-adhesive cable tie mounts are available in 2 colours, black and white, and different sizes for different nylon cable tie widths. They are perfect for quick fastenings on plain walls, held in place by a cable tie without the need to drill holes. The side of the self-adhesive cable tie mount opposite to the surface that adheres to the wall has 4 cavities on each of its sides to pass through the nylon cable tie in order to fasten the desired element

MATERIAL: Polyamide 6.6
Free of halogens

NORMATIVE: EN 62275/15 standard
RoHS Directive (2015/863 / EU)

Part Number	Cable tie width mm	L mm	L1 mm	H mm	Ø D mm	Box Quantity	Outer Box Quantity
03002016N	3,6	19,0	4,0	4,4	3,5	100	24.000
03002017N	4,8	27,8	5,3	5,7	5,7	100	9.000