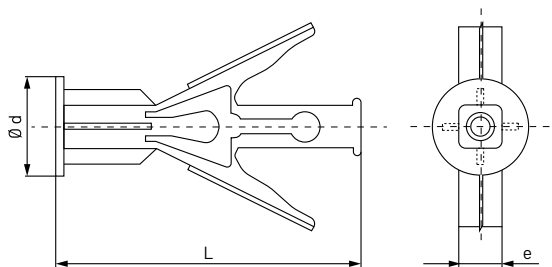
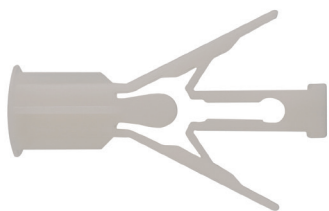


Winged anchor for plasterboard



The nylon plug with wings is particularly suitable for cardboard sheets, plaster and plasterboard sheets. When introduced into hollow spaces, it expands and provides a perfect grip on this type of surface.

MATERIAL: Natural color polyamide
APPLICATION: Hollow walls, plasterboard, ceilings, hollow doors, heuco bricks, plasterboard

Size Ø D x L	Part Number	Ø D Drill	L Length	Bolt Ø Application	Load kN Recommended	EF Fixed thickness	Box Quantity	Outer Box Quantity
8 x 35	09111501	8	35	3,5 x 40	0,22	6 - 13	100	800
8 x 42	09111511	8	42	3,5 x 50	0,22	13 - 20	100	800
10 x 38	09111521	10	38	4 x 50	0,25	6 - 13	100	800
10 x 47	09111531	10	47	4 x 60	0,25	13 - 20	100	800