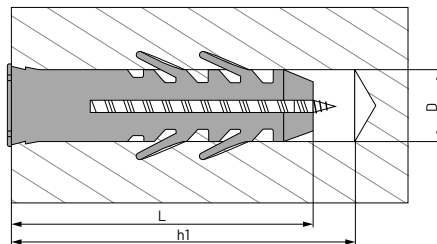
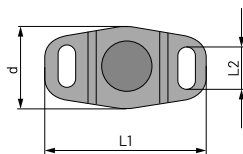
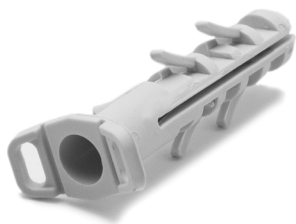


# Standard wall pug for cable ties



It works just as the conventional nylon plug. The difference is that it has two wings at the end of the plug, with a hole in each wing to pass through a nylon cable tie and secure it. This enables fixing any element on solid materials. Once the plug has been inserted into the hole, the wings are visible so that the desired nylon cable tie can be passed through.

**MATERIAL:** Polyamide PA 6  
**APPLICATION:** Concrete, brick, natural stone, sand stone

Size Ø D x L	Part Number	Ø D Drill	L Length	h1 min. Depth	Ø Bolt Application	Load Kn Recommended	L1 Max.	d Max.	L2	Box Quantity	Outer Box Quantity
5 x 25	09110946	5	25	35	2,5 - 4	0,32	11,65	7,35	3,75	200	42.000
6 x 30	09110954	6	30	40	3,5 - 5	0,53	20,00	8,90	4,65	100	10.500
8 x 40	09110962	8	40	50	4,5 - 6	0,75	20,50	10,85	5,65	50	10.500